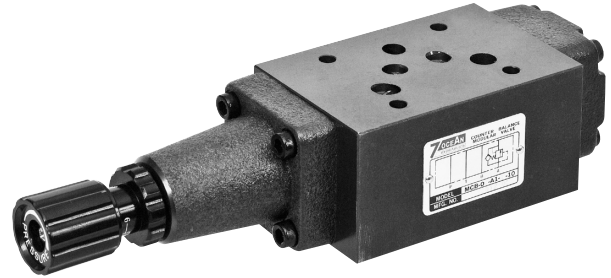


COUNTER BALANCE VALVE

SANDWICH PLATE DESIGN MCB03 SIZE 10

FEATURES :

- Highest performance in NG 10
- Direct operated pressure counter balance valve
- Used for actuator back pressure control
- Sandwich plate design
- 2 Pressure adjusting ranges
- Connections to DIN, ISO and CETOP



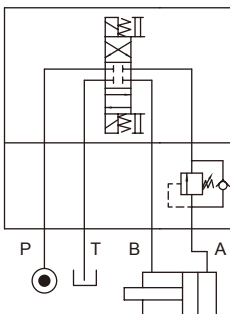
Model: MCB-03-A1-1-10

SPECIFICATION :

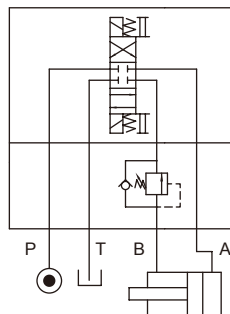
Maximum Flow Rate		80 l/Min (21.1 GPM)
Maximum working pressure		320 Bar (4570 PSI)
Pressure Adjusting Range		1: 7~70 Bar
		2: 35~140 Bar
Ambient Temperature Range		-20°C~+50°C
Hydraulic Fluid Temperature Range		-20°C~+70°C
Viscosity Range		15~400 mm ² /S
Hydraulic Oil		ISO VG32, 46, 68
Fluid Cleanliness		25 μm
Mounting Pattern		ISO 4401-AC-05-4-A
Weight	A Type	3.5 kg
	B Type	3.5 kg

HYDRAULIC CONFIGURATION:

■ MCB-03-A1-*-10



■ MCB-03-B1-*-10



COUNTER BALANCE VALVE SANDWICH PLATE DESIGN MCB03 SIZE 10

ORDERING CODE :

M CB - 03 - A 1 - 1 - 10 - **
 1 2 3 4 5 6 7 8

1 SANDWICH PLATE DESIGN

2 COUNTER BALANCE VALVE

3 NOMINAL VALVE SIZE:

NG 10, CETOP 5 and ISO 4401-05 (NFPA-D05/DIN 24340)

4 CONTROL PORT

A: A port;
 B: B port

5 CONTROL TYPE

1: internal pilot, internal drain

6 PRESSURE ADJUSTING RANGE

1: 7.0~70 Bar
 2: 35~140 Bar

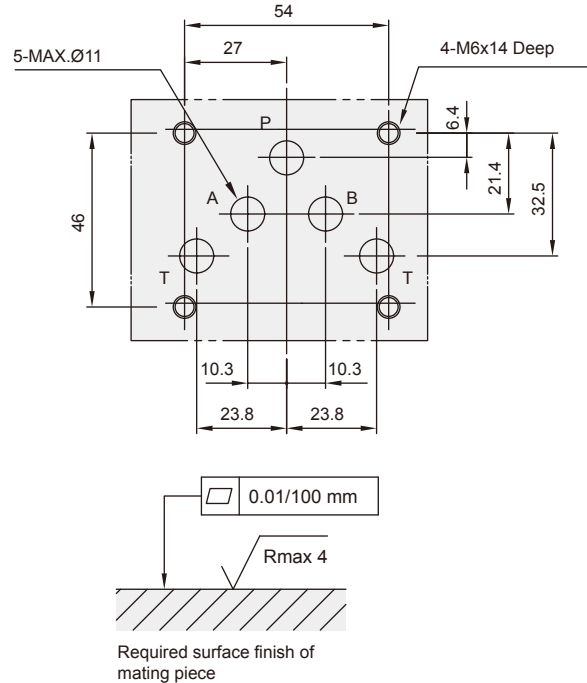
7 DESIGN NUMBER

10: with handle
 20: without handle

8 OPTIONAL INQUIRY

INSTALLATION DIMENSIONS:

(Machined valve mounting face with position of ports)



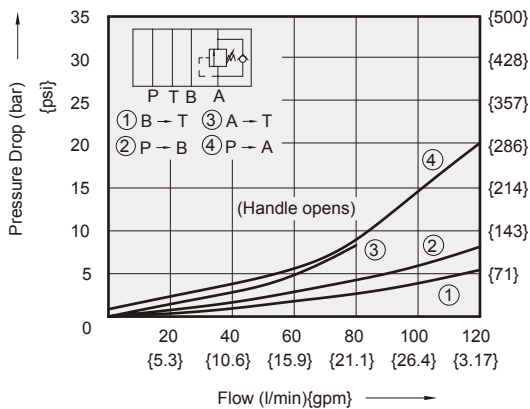
B MCB03 SIZE 10

PERFORMANCE CURVES:

Viscosity of Hydraulic Fluid: 32 mm²/s

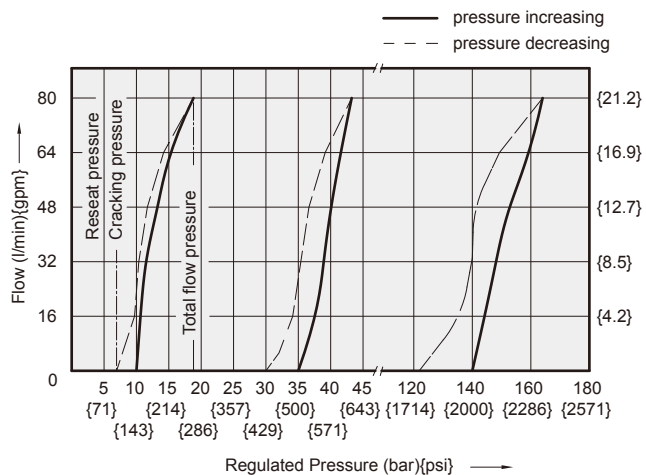
Pressure Drop Characteristic

■ MCB-03-A1-*-10



Regulated Pressure V.S. Flow Diagram

■ MCB-03-A1-*-10
 ■ MCB-03-B1-*-10



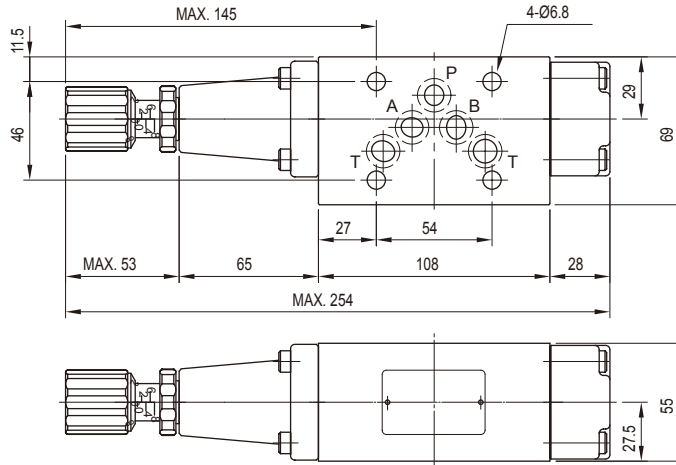
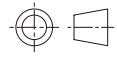
COUNTER BALANCE VALVE

SANDWICH PLATE DESIGN MCB03 SIZE 10

DIMENSIONS :

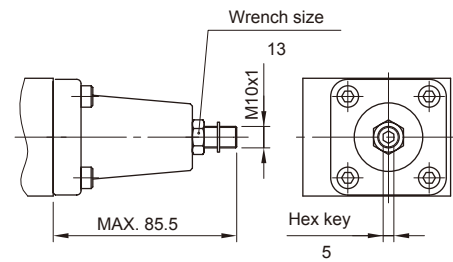
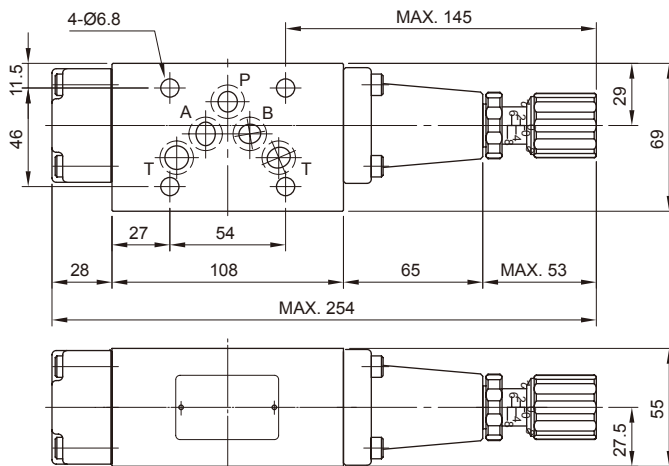
■ MCB-03-A1-*-10

3rd angle projection



■ MCB-03-B1-*-10

■ MCB-03-*-*-20



CROSS SECTION DRAWING :

■ MCB-03-A1-*-10

1. Body
2. Spool
3. Ball
4. Guide
5. Adjustment spring
6. Setting screw
7. Locking nut.
8. Adjustment element
9. Sleeve
10. Piston
11. Sleeve Spring

12. Cover
13. Orifice
14. Connections to DIN 24340 from A10;
valve fixing screws M6x90 DIN 912-10.9,
tightening torque 12~15 Nm
15. O-ring AS586-014(Hs90)
for ports A,B,P and T

16. O-ring BU-P18
17. O-ring 1A-P18
18. O-ring 1B-P26

